

**It is important to read this user manual  
prior to using your new product for the first time.**

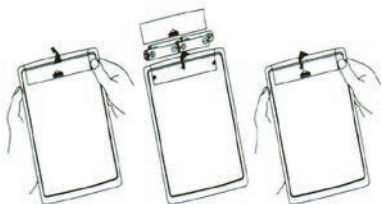
## Powering the Recorder

### Battery installation

1 To remove the battery compartment door(located on the cabinet bottom)press the snap tab and lift the door off the cabinet back.

2. Insert 4 " R14 " (C CELL)-size batteries(not included)into the battery compartment. Be sure the (+) or cap end of each battery is installed as show on the battery diagram.

3. Replace the battery door.



**NOTE:** If the recorder begins to sound distorted, or the tape reels turn very slowly or not at all, be sure to check with a new set of batteries or another cassette before seeking service.

**IMPORTANT:** Be sure to remove the batteries when storing the set for more than a few weeks at a time. Leak batteries can badly damage the recorder. When discarding batteries, be sure to dispose of them in the proper manner, according to provincial and local regulations.

Always push STOP before storing. This will relieve pressure on certain parts in the recorder that might deform after long periods of time.

## **AC power converter**

The AC Power Converter plugs into the 6-V DC PWR JACK on the recorder(which automatically disconnects the batteries), and plugs into 230-volt AC household power.

**IMPORTANT:** The AC Power Converter coming with this unit is intended to be correctly orientated in a vertical or floor mount position.

## **Car adapter(Optional)**

Your recorder may be operated from the cigarette lighter socket in a car. The optional Car Adapter plug into the 6-V DC PWR JACK on the recorder,which automatically disconnects the batteries.

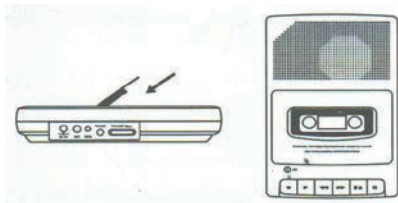
## **Headphone (Not included)**

Your can plug a set of headphones to your set. With the headphone plugged in,the speaker is automatically silenced for private listening. Your set is also equipped with EARPHONE MONITOR capability when recording direct from other sound source such as other tape recorders,radios or phonographs.You can listen to what's being recorded by plugging in a set of headphones and an adapter.

## Using your Cassette/Recorder

### To insert or remove cassette

1. Press **STOP/EJECT** if any of the buttons are depressed.
2. Press **STOP/EJECT** to open CASSETTE DOOR.
3. Insert a cassette tape with a full reel at its left and open edge facing towards you, then push on the deck door to close. Unload a cassette tape by following the above steps 1 and 2, take out the tape, push on the deck door to close.



NOTE: Some special formula tapes(chromium dioxide and metal particle tapes) cannot be properly recorded on this product. These tapes can, however be used for playback.

### Tape Play

To listen to you recorded tape cassette:

1. Insert cassette as explained above.
2. Rewind tape to the starting point if necessary.(See REWIND operation.)
3. Press **PLAY**.
4. Adjust **VOLUME** control.

## **Built-in microphone recording**

1. Insert cassette as previously described. Press RECORD(the **PLAY** button is depressed with it).You are now recording. If the RECORD button does not depress, see“PREVENT ACCIDENTAL ERASURE”.
2. Talk normally into the BUILT-IN CONDENSER MICROPHONE. To obtain optimum recording quality, place the recorder with the microphone freely exposed and as close as convenient to the sound source.

3.

**NOTE:** The automatic level control(ALC)will set the record level for optimum recordings,regardless of volume setting.

## **Automatic stop**

When your recorder is operating in PLAY or RECORD mode and the end of the tape is reached, your unit will automatically shut itself off and return the buttons to the OFF position.

## **Stand-up microphone recording**

The record with stand-up microphone, plug the microphone into the **MICROPHONE** jack and follow the built-in microphone recording instructions. When the stand-up microphone is used,the built-in microphone is automatically disconnected.

## **Tape erase**

To erase a tape simply record over the unwanted recording.

## Rewind

To run the tape back to the beginning of your recording, press **REWIND**. Then press **STOP** after you have rewound to the desired point on the tape.

## Fast Forward(F-fwd)

Press **F-FWD** to skip over portions of the tape quickly. Press **STOP** after you have advanced to the desired point on the tape.

## Pause control

Your recorder is equipped with a **PAUSE** control which will stop **PLAY** & **RECORD** operation. Press **PAUSE** to stop **PLAY** or **RECORD** operation. Press again to release **PAUSE** for continued operation.

## USB Play and Recording from MIC

1. Insert the USB device to USB port on the top of unit.
2. Set **USB/TAPE(OFF)** switch to **USB**.
3. Press **PLAY/PAUSE** button to playback music from USB device. Press **PLAY/PAUSE** button again to stop play,at meantime the red USB indicator will blink once about a second.
4. Press and hold the **PLAY/PAUSE/REC** button to record from the **MIC**(built-in), the red **REC** indicator will keep blinking rapidly. Press the **PLAY/PAUSE/REC** button again to stop Recording.
5. Then press and hold the **PLAY/PAUSE/REC** button once again to play music or the sound recording from USB device. Press **PLAY/PAUSE** button again to stop play.

6. Set USB/TAPE(OFF) button to TAPE(OFF) to stop USB playing mode and to TAPE mode.

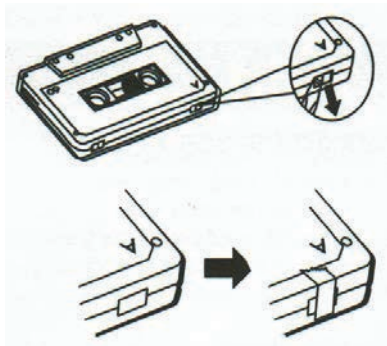
### **Recording from Tape to USB**

1. Set USB/TAPE(OFF) switch to TAPE and play the tape, insert the USB device to USB port, press and hold the **PLAY/PAUSE/REC** button to record from the tape, the red REC indicator will keep blinking rapidly. Press the **PLAY/PAUSE/REC** button again to stop Recording.
2. Set USB/TAPE(OFF) switch USB, Press **PLAY/PAUSE** button to playback music from USB device. Press **PLAY/PAUSE** button again to stop play,at meantime the red USB indicator will blink once about a second.

## Care & Maintenance

Prevent accidental erasure

Whenever you make a recording, any previous recording on the tape is automatically erased. When you have a recording you want to keep permanently, snap out the rear left tab of the side you want to save as shown in the illustration below.



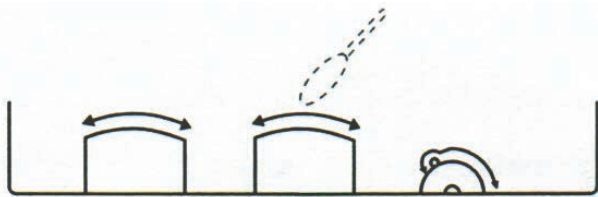
When a cassette with the tab snapped out is inserted into the tape unit, accidental erasure is prevented by a lever in the mechanism that keeps the RECORD button from depressing. Cellophane tape can be placed over the original recording. Similarly, you can record over purchased pre-recorded cassettes.

**PLEASE NOTE:** Your unit is equipped with a cassette sensing mechanism prevents the RECORD button from being depressed when a cassette is not in the unit.



## Cleaning the heads

Iron oxide particles from the magnetic tape can build up on the parts that come in contact with the tape. These deposits can cause incomplete erasure, muffled playback sound, and might prevent automatic stop. To clean a cassette tape, open the compartment door, push the PLAY button and gently and gently clean the heads, capstan, and pinch wheel with a head cleaner.



Always unplug the power cord before cleaning, and allow 30 minutes drying time when using a liquid cleaner.

Clean heads after every 25 hours of use.

- Demagnetize the head occasionally with a head demagnetizing cassette (available from many audio equipment stores).
- Never use any metal objects on or near the tape heads. Do not allow any cleaning material to fall into the tape assembly.

## Tape care

- Don't expose tapes to sunlight or store in hot places. High temperatures may warp the shell or damage the tape itself.
- Keep cassettes in their boxes when not in use.

-Cassette tapes can be erased by magnetic fields produced by magnets,electric motors,electrical transformers,and other devices. Keep tapes away from magnets and magnetic fields.

### **QUIT SLACKING**

A little bit of slack in your tapes can cause scratches on the tape,or worse yet,the tape could break.If you notice some slack in the tape,use a pencil to tighten it up before you insert it.



## FCC NOTICE

Warning: Changes or modifications to this unit not expressly approved by the party responsible for compliance could void the user's authority to operate the equipment.

**NOTE:** This equipment has been tested and found to comply with the limits for a Class B digital device, pursuant to Part 15 of the FCC Rules. These limits are designed to provide reasonable protection against harmful interference in a residential installation. This equipment generates, uses and can radiate radio frequency energy and, if not installed and used in accordance with the instructions, may cause harmful interference to radio communications.

However, there is no guarantee that interference will not occur in a particular installation. If this equipment does cause harmful interference to radio or television reception, which can be determined by turning the equipment off and on, the user is encouraged to try to correct the interference by one or more of the following measures:

- Reorient or relocate the receiving antenna.
- Increase the separation between the equipment and receiver.
- Connect the equipment into an outlet on a circuit different from that to which the receiver is connected.
- Consult the dealer or an experienced radio/TV technician for help.